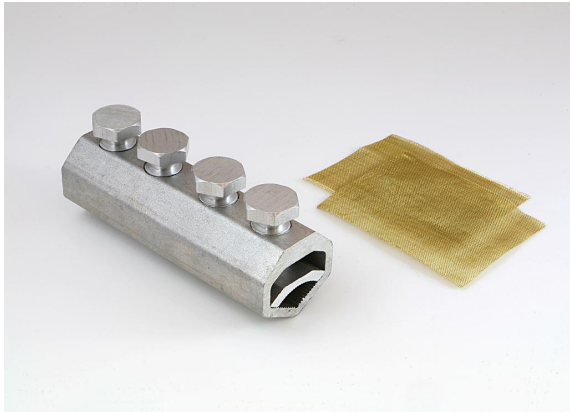
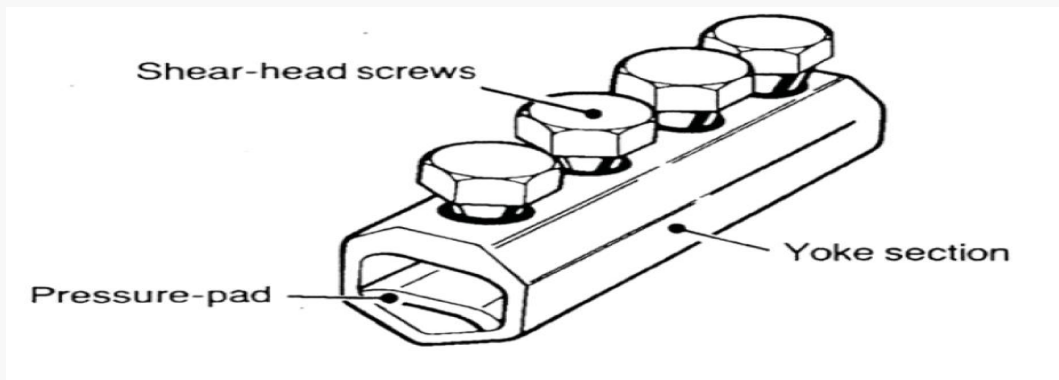


Mechanicle shear head connectors

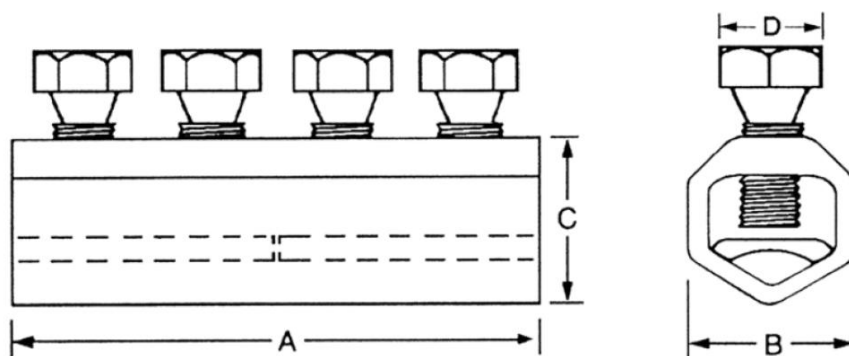


Joining of stranded aliminum or copper cores in appliactions up to 11KV Shear off screws to ensure a consistant and reliable connection Supplied with brass gauze to improve electrical stability when joining copper cores.



Mechanicle shear head connectors

Specifications



Connector reference	A	B	C	D
MF1/1	80.0	25.0	25.0	13.0
MF1/2	100.0	34.0	32.5	17.0
MF1/3	120.0	40.0	41.0	17.0
MF1/4	120.0	47.5	51.0	19.0
MF1/3A	120.0	40.0	41.0	17.0

Mechanicle shear head connectors

More info

Fitting Instructions

Cut the cores to length, strip the insulation from each core equal to the length of a pressure pad plus 6mm and thoroughly abrade the exposed conductors.

loosen the screws, and fit the connector over one of the cores, where possible sliding the full length of the barrel back over the insulation.

Align the cores and the connector back over both conductors until centrally located. Insert the pressure pads and tighten the screws consecutively, one turn at a time until the heads are sheared from all four screws.

* Copper conductors must be wrapped in brass gauze to improve the electrical stability of the connection.

Products

Art.nr.	Product Name	Order unit
400038	MF1/1	
400040	MF1/2	
400050	MF1/3	
400060	disabled-product	
MF1/3A	MF1/3A	