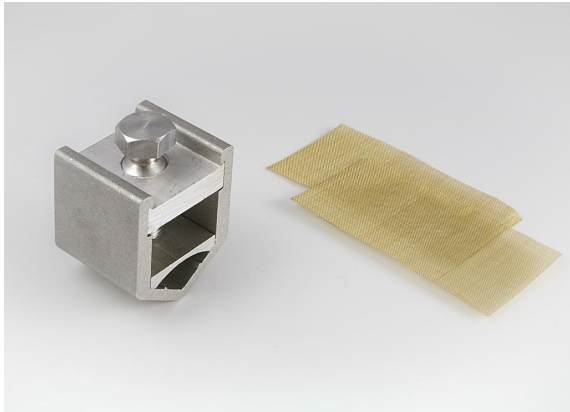
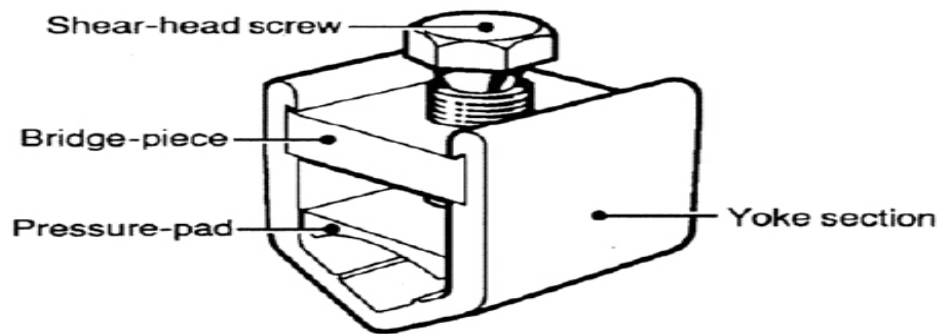


## US Branch Connectors



Joining from stranded service cables (50mm max) to staranded sector shaped main conductors (300mm max)  
Sheer off screws to ensure a consistant and reliable connection Supplied with brass gauze to improve electrical stability when joining copper cores.



## Specifications

Connector reference	A	B	C	D
US1	26.0	25.0	40.0	17.0
US2	31.0	30.0	44.0	17.0
US3	42.0	40.0	53.0	17.0

## More info

### Fitting Instructions

Separate the main cable cores sufficiently to allow the yoke section to be fitted around the conductor and strip the insulation from the core equal to the connector length plus 5mm. Cut the service conductor length, strip the insulation to suit, then separate the individual strands and splay out to form a single layer that will spread out over the back radius of the mains conductor.

loosely assemble the connector around the cores by inserting the bridge piece and locating the pressure pad over the splayed out service strands, then tightening the shear head screw until positive location is achieved. Check for even distribution of the service strands then finally tighten the screw until the head shears off.

If copper conductors are to be jointed they should be wrapped in brass gauze. in case of a copper service conductor being jointed onto a stranded aluminum main, care must be taken to ensure that the individual strands of the service conductor are spread out in the fashion described above within the wrap of the brass gauze.

All conductors must be thoroughly abraided.

## Products

Art.nr.	Product Name	Order unit
400080	US1	
400090	US2	
400100	US3	