

B frame - 120x240mm



To partner with the Filoseal+HD and Filoseal+HD FIRE, Filoform have created frames to hold a seal where the space or structure will not allow fitting of a seal into the structure itself.

Up to 4 hours fire resistance in transit frames (single side)
Tested to BS EN1366-3 2009
Upto 2 bar Pressure Resistance
100Kg pulling Force on the cables when sealed
10xd at 45°, with 1 bar pressure bending test

Specifications

The modularity of the frame is based around two opening sizes; they are 120 x 120mm (type A) or 120 x 240mm (type B) which

somewhat follows the frame sizing of regular transit systems. Obviously, for a larger hole, we build a multi-opening frame to

B frame - 120x240mm

Built frames - (A Frame & B Frame)

Built frame size notation.

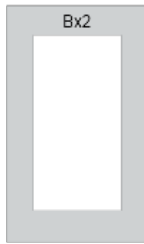
Frames of **Type B** (120 x 240 opening. For clarity, all frames are 120 wide, it is the height that changes.

Frames types followed by an 'xn' notation means there are n number of openings set out horizontally in a row.

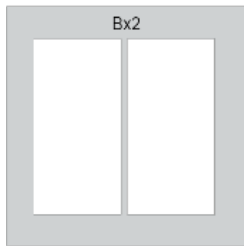
Frames types followed by a '+type A or B' notation mean the frames are stacked vertically on top of each other.

So a frame denoted B+B+B x8 means there are 24 openings in total of size B, in columns of 3 high 8 times over.

Cable Transit Frame Key



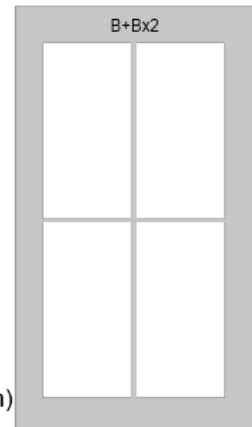
B x 1 (1 opening, 120x240mm)



B x 2 (2 openings, side by side 120x240mm)



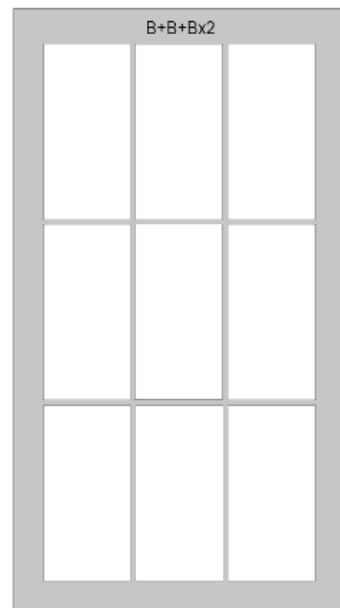
B+B (2 openings on top of each other 120x240)



B+B x 2 (4 openings, 2 in a row x 2 high 120x240mm)



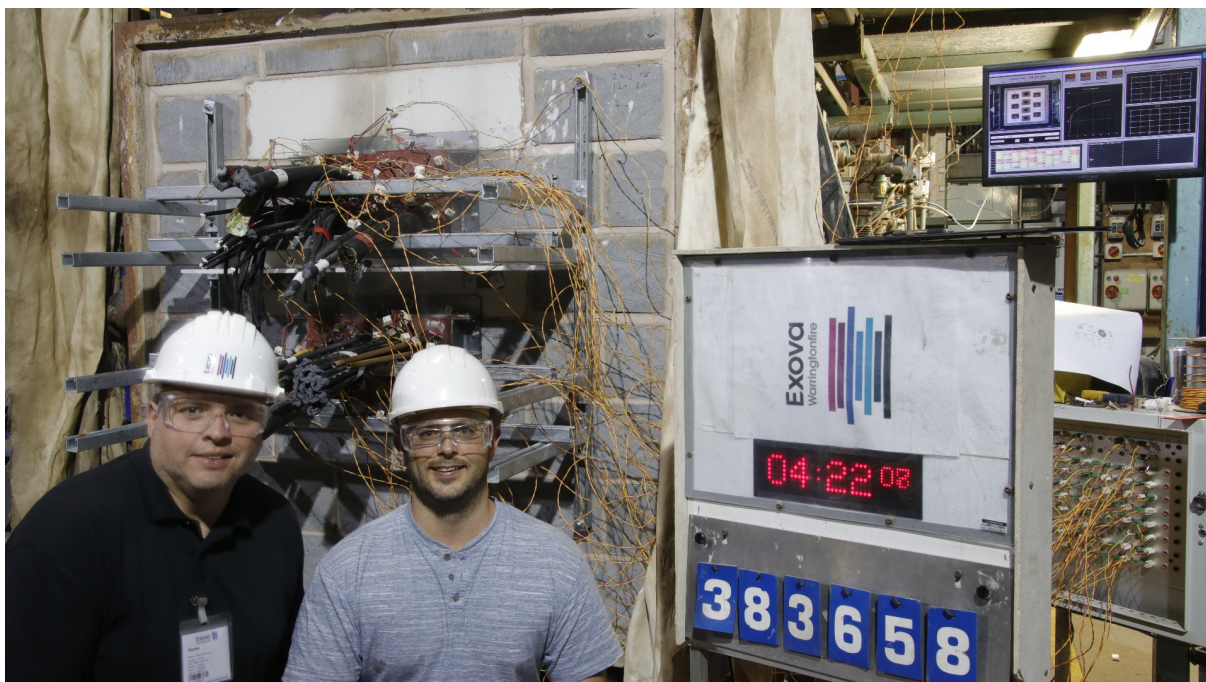
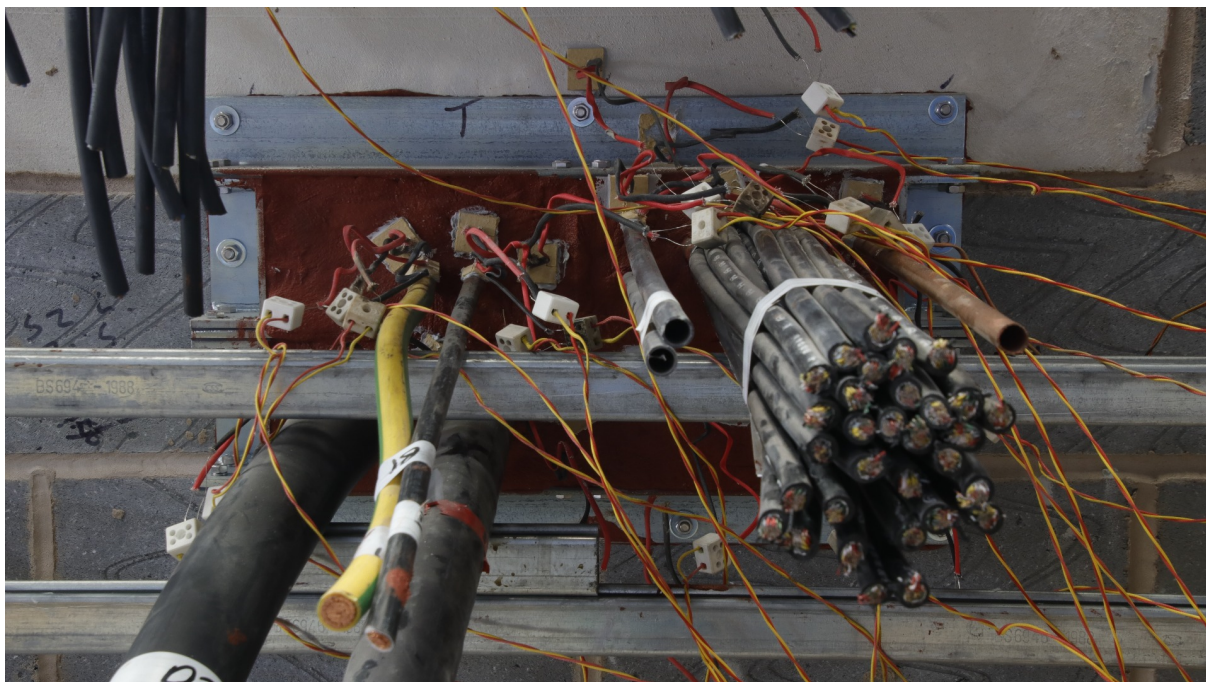
B+B+B (3 openings on top of each other 120x240)



B+B+B x 3 (9 openings, 3 in a row x 3 high 120x240mm)

B frame - 120x240mm

More info



Products

Art.nr.	Product Name	Order unit
B x 1	B x 1 (1 opening, 120x240)	per frame
B x 2	B x 2 (2 openings side by side, 120x240)	per frame
B x 3	B x 3 (3 openings side by side, 120x240)	per frame
B x 4	B x 4 (4 openings side by side, 120x240)	per frame
B x 5	B x 5 (5 openings side by side, 120x240)	per frame
B x 6	B x 6 (6 openings side by side, 120x240)	per frame
B x 7	B x 7 (7 openings side by side, 120x240)	per frame
B x 8	B x 8 (8 openings side by side, 120x240)	per frame
B + B	B + B (2 openings on top of each other 120x240mm)	per frame
B + B x 2	B + B x 2 (4 openings, 2 in a row x 2 high 120x240mm)	per frame
B + B x 3	B + B x 3 (6 openings, 3 in a row x 2 high 120x240mm)	per frame
B + B x 4	B + B x 4 (8 openings, 4 in a row x 2 high 120x240mm)	per frame
B + B x 5	B + B x 5 (10 openings, 5 in a row x 2 high 120x240mm)	per frame
B + B x 6	B + B x 6 (12 openings, 6 in a row x 2 high 120x240mm)	per frame
B + B x 7	B + B x 7 (14 openings, 7 in a row x 2 high 120x240mm)	per frame
B + B x 8	B + B x 8 (16 openings, 8 in a row x 2 high 120x240mm)	per frame
B + B + B	B + B + B (3 openings on top of each other 120x240mm)	per frame

B frame - 120x240mm

B + B + B x 2	B + B + B x 2 (6 openings, 2 in a row x 3 high 120x240mm)	per frame
B + B + B x 3	B + B + B x 3 (8 openings, 3 in a row x 3 high 120x240mm)	per frame
B + B + B x 4	B + B + B x 4 (12 openings, 4 in a row x 3 high 120x240mm)	per frame
B + B + B x 5	B + B + B x 5 (15 openings, 2 in a row x 3 high 120x240mm)	per frame
B + B + B x 6	B + B + B x 6 (18 openings, 6 in a row x 3 high 120x240mm)	per frame
B + B + B x 7	B + B + B x 7 (21 openings, 7 in a row x 3 high 120x240mm)	per frame
B + B + B x 8	B + B + B x 8 (24 openings, 8 in a row x 3 high 120x240mm)	per frame